

BMW WHEEL RIM LOCATION

R50/5 - R75/5 & R60/6

Front Rim 1.85"

Rear Rim 1.85"

Rear Rim 2.15"

Tool No.

36·3·820

36·3·820

36·3·850

Offset

10.0mm

6.5mm

6.5-7.5mm

R75/6 - R90/6 - R905

R75/7 - R 80/7*

R100/7 - R100S* & R100RS*

Front Rim 1.85"

Rear Rim 2.15"

Tool No.

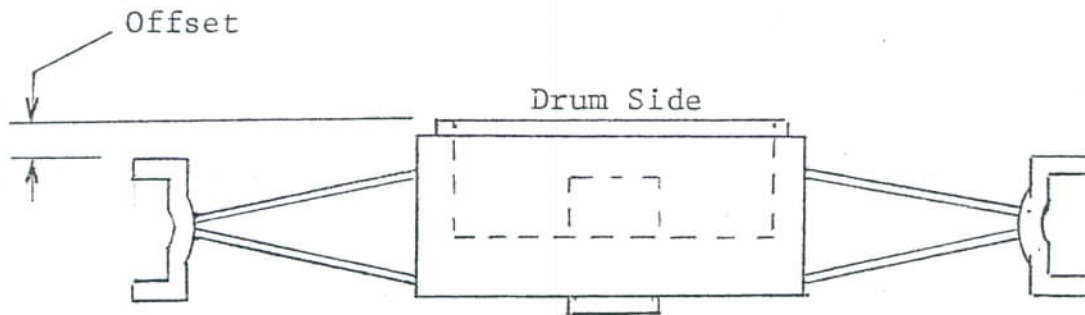
36·3·850

36·3·850

Offset

5.5-6mm

6.5-7.5mm



*Up to 1977