

Service-Information Motorcycle



BMW NA
Service Department

Group: 16
Fuel Tank
& Lines

June 1994
16 018 94
(2630R)

Pg. 1 of 4
For USA Only

Fuel Pump Noise - K Models - REVISED

Please replace the first two pages of SI 2630 with these two pages of 2630R.

Problem: When the fuel level is very low the fuel pump is pumping air

Affected Motorcycles: K K1100 RS All
K 1100 LT 0183782 >
K 1 6378114 >
K 75 0253816 >

Information: The back bone of the main frame and the fuel tank were redesigned starting with the above motorcycles. Every thing the inside of the fuel tank was changed. Some riders have voiced complaints of noise, and of running out of fuel before the fuel tank is empty. This can occur because the fuel return aperture dumps the circulated fuel on the right hand side of the tank opposite where the fuel pump is located.

Remedy: Alter the path of the return fuel by carefully bending the return pipe and installing a 570 mm (22.8 in), length of hose, - directing the fuel to the side of the tank where the fuel pump is located.

Please refer to fig. 1 through 6 on the next pages for photos.

Parts needed:	570 mm (22.8 in.) of fuel hose	PN 16 12 1 180 040 (roll)
	1 hose clamp	PN 16 11 1 177 646
	1 cable tie	PN 61 13 1 367 599
	Choice of two "do it yourself tools":	The second works best.
	Fig #1 New or used spoke cut and bent as shown	PN 36 31 1 452 737 or
Fig #1A A foot guard cut as shown	PN 46 71 2 311 822	

Procedure: Remove the fuel cap.. The return line is about 25 mm (1 in.) long and is located inside the fuel filler opening, near the front right fuel cap screw. It fits up very close to the top of the tank - insert into this pipe (your choice of the special tools) and bend the pipe (Fig. 2) only enough to get the fuel line and clamp onto the pipe (Fig.4) Route the hose from the top right across to the left side of the fuel tank just in front of the fuel pump (Fig. 3), be sure to use a cable tie (Fig 5) to hold the hose to the line shown in Fig 5. Check that the hose does not interfere with the fuel level sensor.

Please initial and route to the following before filing						
Service	Parts	Sales	Warranty	Technicians		

Service-Information Motorcycle



BMW NA
Service Department

Group: 16
Fuel Tank
& Lines

June 94
16 018 94
(2630) R

Pg. 2 of 4
For USA Only

Warranty: File a warranty claim
Defect Code Number 1612 51 7700
Flat Rate Number 16 99 000
Flat Rate Units 5



Fig. 1 Modified spoke, scale 1:1 PN 36 31 1 452 737



Fig. 1A Modified foot guard hoop, scale 1:1 PN 46 712 311 822

BMW of North America, Inc.

Joe Wagner
National Service Manager
Motorcycle Group

Daniel E. Browning
National Technical/Training Manager
Motorcycle Group

S12630.doc
Please initial and route to the following before filing

Service	Parts	Sales	Warranty	Technicians		

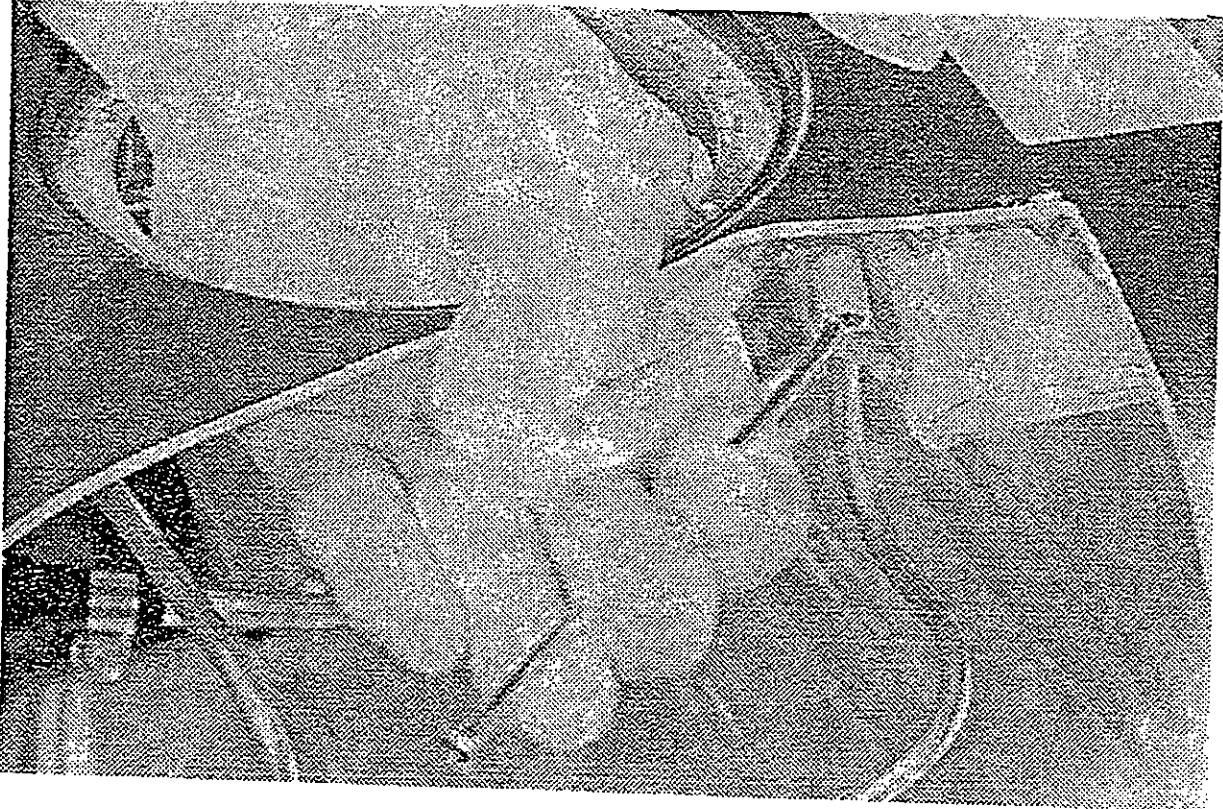


Fig. 2: Bending the fuel return pipe (viewed from the right)

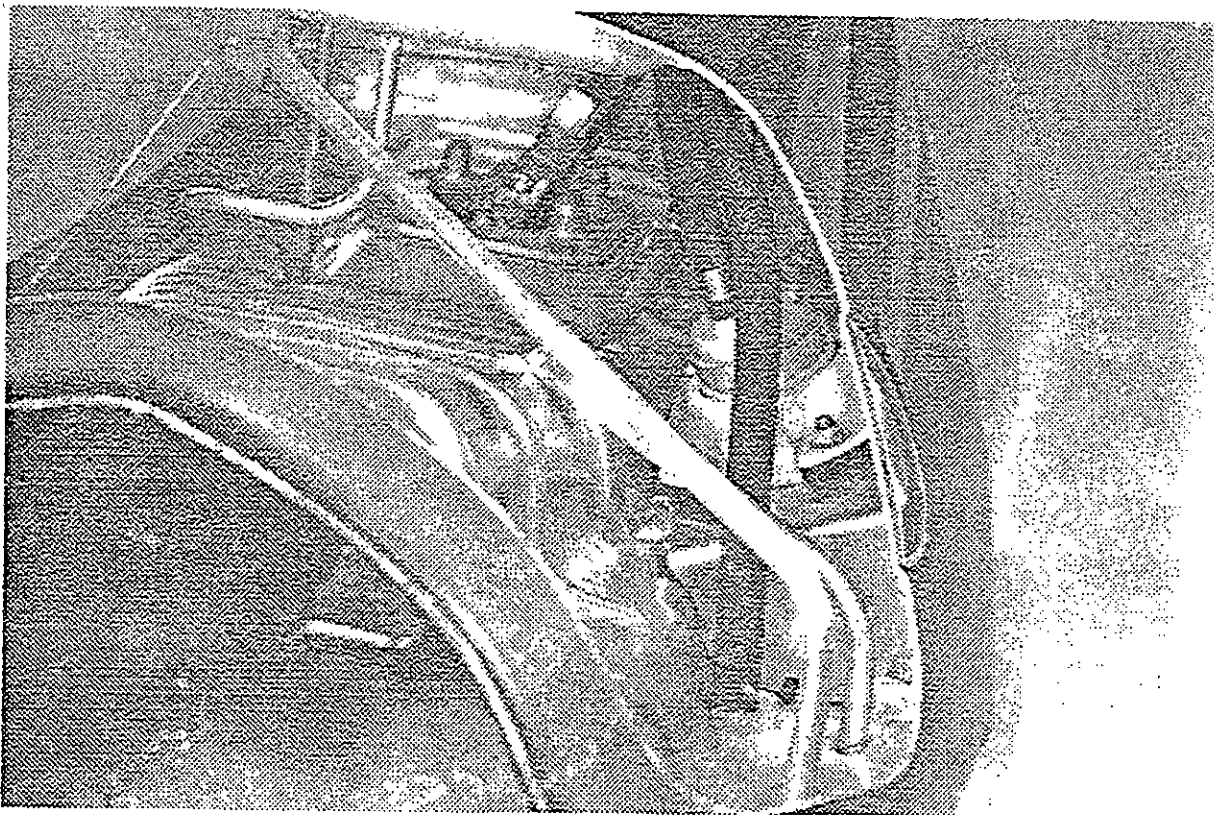


Fig. 3: Location of the fuel hose at the fuel pump (viewed from the front)



Fig. 4: Correct position of the hose clip (viewed from the right)

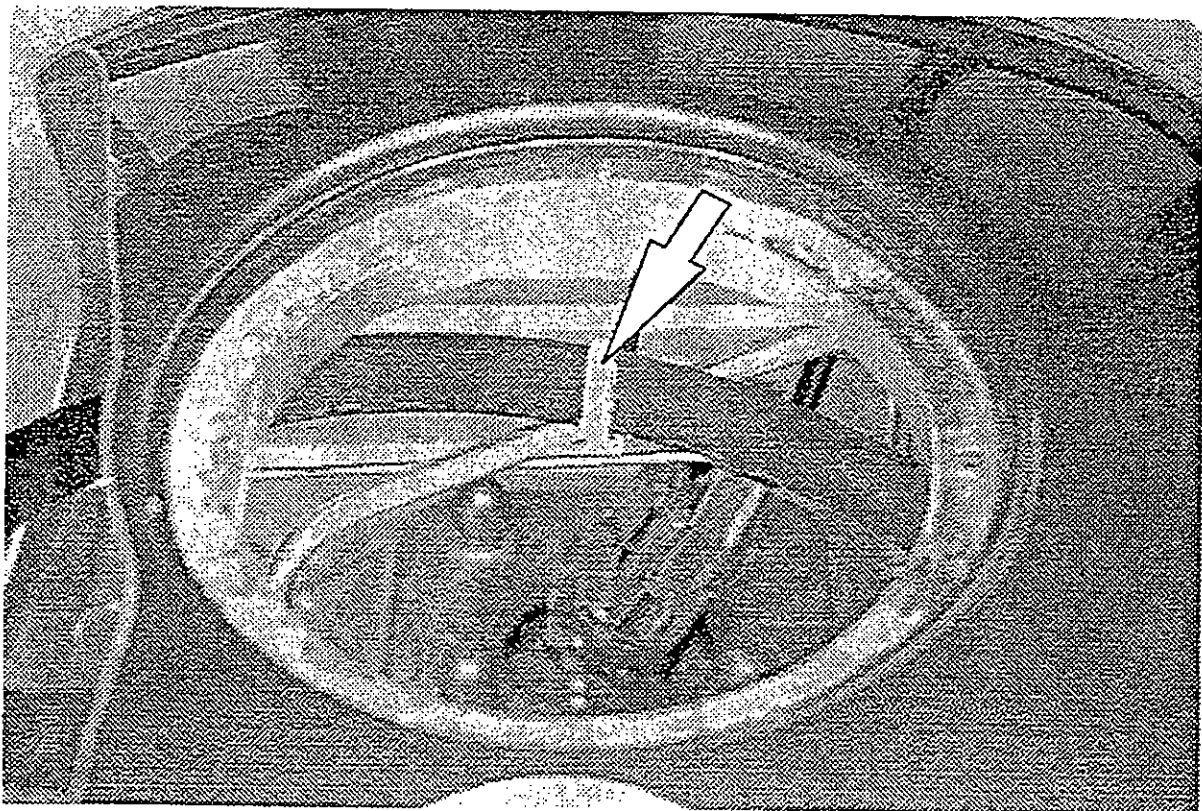


Fig. 5: Securing the hose to the horizontal line (viewed from the front)